



RECORD OF TITLE
UNDER LAND TRANSFER ACT 2017
CROSS LEASE
Search Copy

DISCLAIMER

This document has been obtained on behalf of the client and is made available to customers for general information purposes only. Neither Barfoot & Thompson nor their client warrant the accuracy, completeness or currency of this document nor do they accept liability for any errors or omissions in this document. All customers should obtain and rely on their own documents and legal advice.



R. W. Muir
Registrar-General
of Land

Identifier NA78B/761
Land Registration District North Auckland
Date Issued 04 September 1989

Prior References
NA54C/378

Estate Fee Simple - 1/15 share
Area 4595 square metres more or less
Legal Description Lot 2 Deposited Plan 100018

Registered Owners
Yuan Fong

Estate Fee Simple - 1/45 share
Area 137 square metres more or less
Legal Description Lot 4 Deposited Plan 100018

Registered Owners
Yuan Fong

Estate	Leasehold	Instrument	L C037018.9
		Term	999 years commencing on the 1st September 1989

Legal Description Flat 8 Deposited Plan 133071

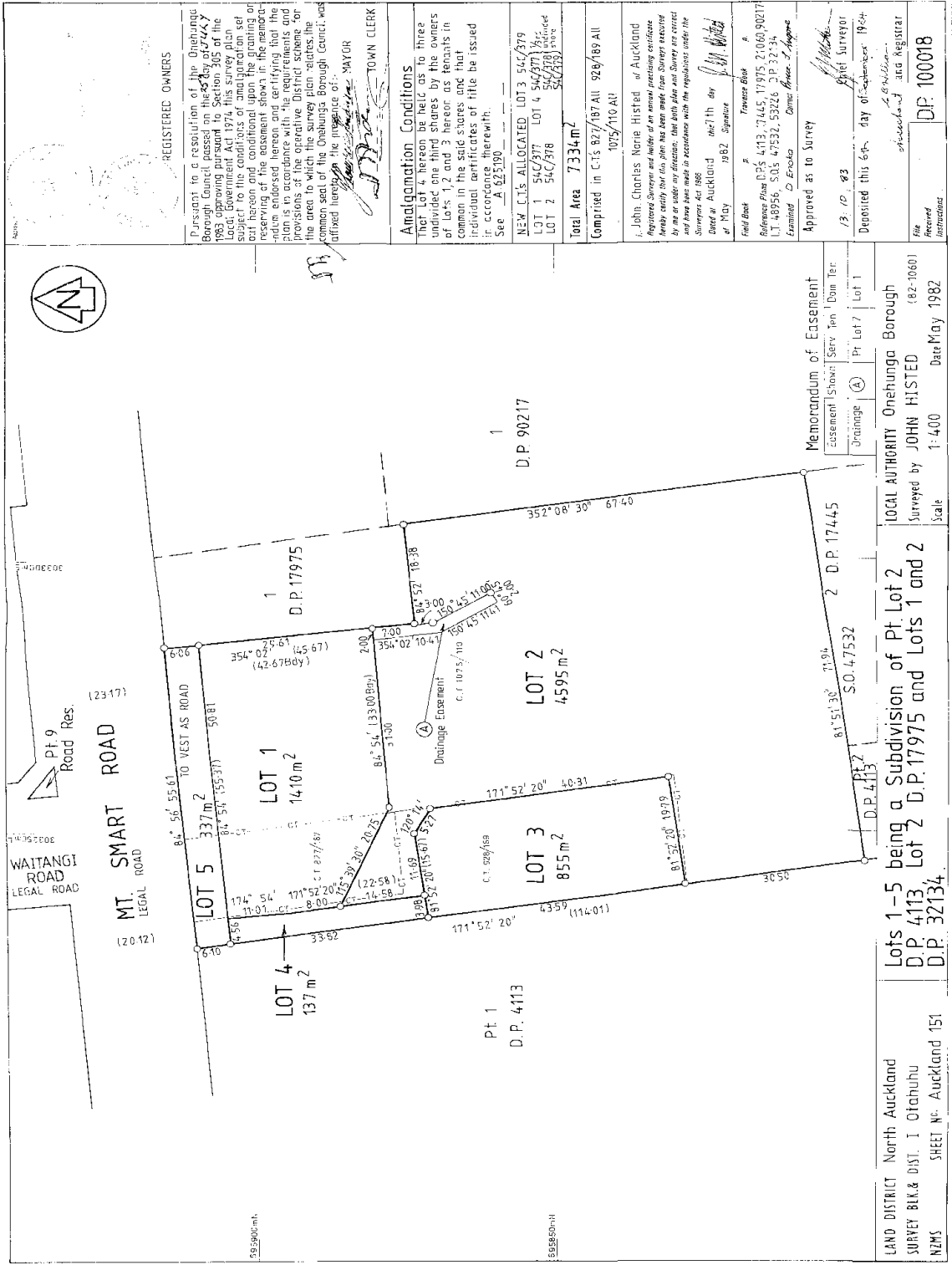
Registered Owners
Yuan Fong

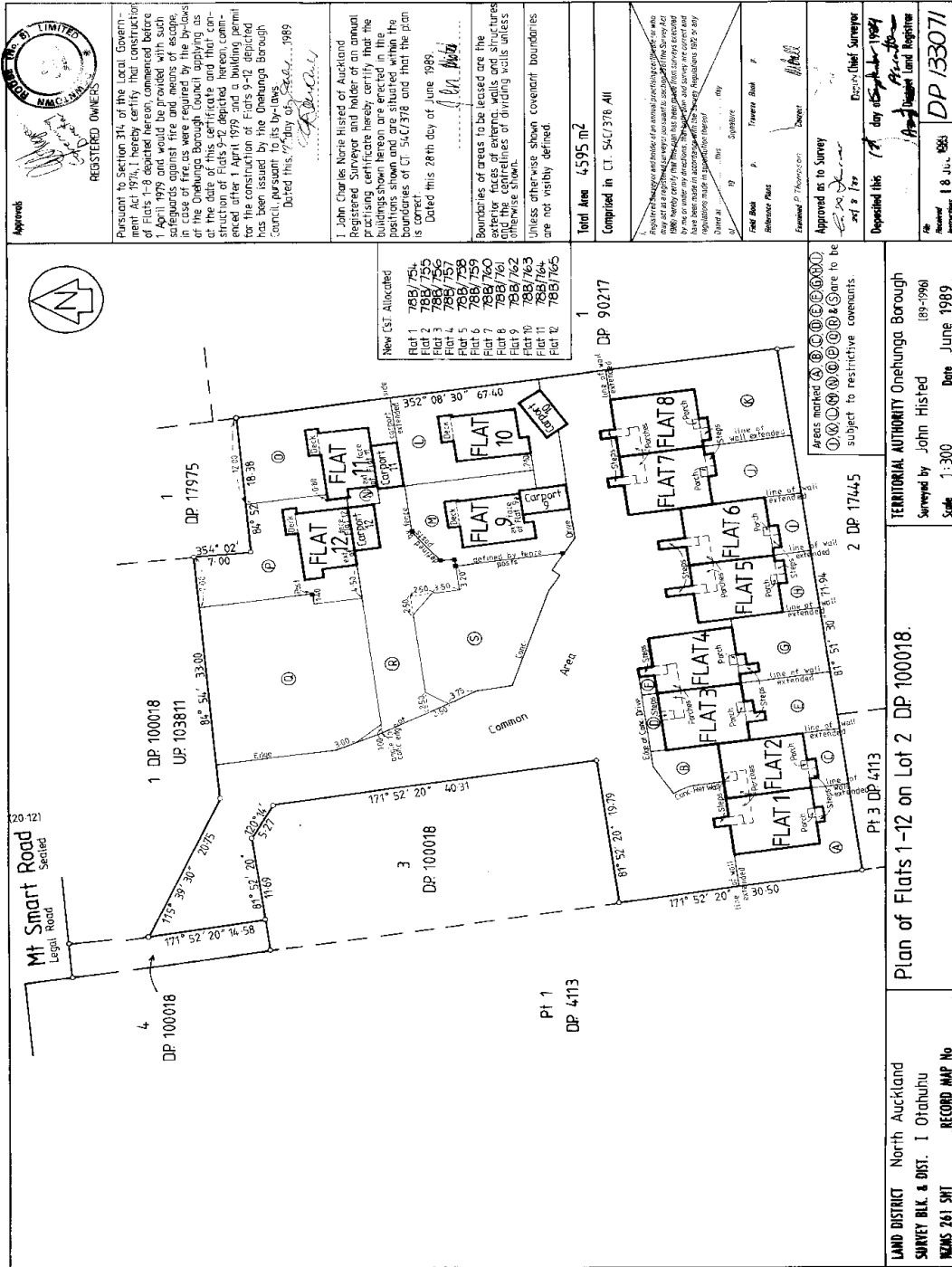
Interests

- Subject to Section 308 (4) Local Government Act 1974 (Affects Fee Simple)
- B327180.4 Resolution pursuant to Section 321(3)(c) Local Government Act 1974 - 6.9.1989 at 1.52 pm (Affects Fee Simple)
- C037018.2 Lease of Flat 1 DP 133071 Composite CT NA78B/754 issued - 4.9.1989 at 2.25 pm (Affects Fee Simple)
- Land Covenant in Lease C037018.2 - 4.9.1989 at 2.25 pm (Affects Fee Simple)
- C037018.3 Lease of Flat 2 DP 133071 Composite CT NA78B/755 issued - 4.9.1989 at 2.25 pm (Affects Fee Simple)
- Land Covenant in Lease C037018.3 - 4.9.1989 at 2.25 pm (Affects Fee Simple)
- C037018.4 Lease of Flat 3 DP 133071 Composite CT NA78B/756 issued - 4.9.1989 at 2.25 pm (Affects Fee Simple)
- Land Covenant in Lease C037018.4 - 4.9.1989 at 2.25 pm (Affects Fee Simple)
- C037018.5 Lease of Flat 4 DP 133071 Composite CT NA78B/757 issued - 4.9.1989 at 2.25 pm (Affects Fee Simple)
- Land Covenant in Lease C037018.5 - 4.9.1989 at 2.25 pm (Affects Fee Simple)
- C037018.6 Lease of Flat 5 DP 133071 Composite CT NA78B/758 issued - 4.9.1989 at 2.25 pm (Affects Fee Simple)
- Land Covenant in Lease C037018.6 - 4.9.1989 at 2.25 pm (Affects Fee Simple)
- C037018.7 Lease of Flat 6 DP 133071 Composite CT NA78B/759 issued - 4.9.1989 at 2.25 pm (Affects Fee Simple)
- Land Covenant in Lease C037018.7 - 4.9.1989 at 2.25 pm (Affects Fee Simple)

Identifier**NA78B/761**

C037018.8 Lease of Flat 7 DP 133071 Composite CT NA78B/760 issued - 4.9.1989 at 2.25 pm (Affects Fee Simple)
Land Covenant in Lease C037018.8 - 4.9.1989 at 2.25 pm (Affects Fee Simple)
Land Covenant in Lease C037018.9 - 4.9.1989 at 2.25 pm (Affects Fee Simple)
C037018.9 Lease of Flat 8 DP 133071 Term 999 years commencing on the 1st September 1989 Composite CT NA78B/761 issued - 4.9.1989 at 2.25 pm (Affects Fee Simple)
C037018.10 Lease of Flat 9 DP 133071 Composite CT NA78B/762 issued - 4.9.1989 at 2.25 pm (Affects Fee Simple)
Land Covenant in Lease C037018.10 - 4.9.1989 at 2.25 pm (Affects Fee Simple)
C037018.11 Lease of Flat 10 DP 133071 Composite CT NA78B/763 issued - 4.9.1989 at 2.25 pm (Affects Fee Simple)
Land Covenant in Lease C037018.11 - 4.9.1989 at 2.25 pm (Affects Fee Simple)
C037018.12 Lease of Flat 11 DP 133071 Composite CT NA78B/764 issued - 4.9.1989 at 2.25 pm (Affects Fee Simple)
Land Covenant in Lease C037018.12 - 4.9.1989 at 2.25 pm (Affects Fee Simple)
C037018.13 Lease of Flat 12 DP 133071 Composite CT NA78B/765 issued - 4.9.1989 at 2.25 pm (Affects Fee Simple)
Land Covenant in Lease C037018.13 - 4.9.1989 at 2.25 pm (Affects Fee Simple)
Subject to a drainage right over part marked A on DP 100018 created by Transfer B327180.13 - 6.9.1989 at 1.52 pm (Affects Fee Simple)
The easements created by Transfer B327180.13 are subject to Section 309 (1) (a) Local Government Act 1974
C128056.3 Lease of Flat 13 & Carport 13 DP 137040 Term 999 years commencing on the 1st September 1989 Composite CT NA81B/90 issued - 12.4.1990 at 2.45 pm (Affects Fee Simple)
Land Covenant in Lease C128056.3 - 12.4.1990 at 2.45 pm (Affects Fee Simple)
C128056.4 Lease of Flat 14 & Carport 14 DP 137040 Term 999 years commencing on the 1st September 1989 Composite CT NA81B/91 issued - 12.4.1990 at 2.45 pm
Land Covenant in Lease C128056.4 - 12.4.1990 at 2.45 pm (Affects Fee Simple)
C128056.5 Lease of Flat 15 & Carport 15 DP 137040 Term 999 years commencing on the 1st September 1989 Composite CT NA81B/92 issued - 12.4.1990 at 2.45 pm (Affects Fee Simple)
Land Covenant in Lease C128056.5 - 12.4.1990 at 2.45 pm (Affects Fee Simple)
C128056.6 Variation of Lease C037018.13 - 12.4.1990 at 2.45 pm (Affects Fee Simple)
Land Covenant in Variation of Lease C128056.6 - 12.4.1990 at 2.45 pm
D298532.3 Mortgage to The National Bank of New Zealand Limited - 3.8.1998 at 2.45 pm





1 2 3 4 5 6 7 8 9 10 11 12 13 14 15 16 17 18 19 20 21 22 23 24 25 26 27 28 29 30 31 32 33 34 35 36 37 38 39 40 41 42 43 44 45 46 47 48 49 50 51